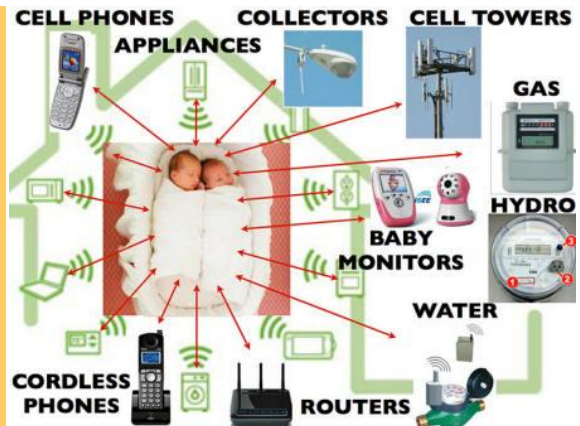


Say it with Pictures



Volume 4 Edition 11

April 30, 2015

L. wrote to the Center for Safer Wireless, "I find your work outstanding and save all of the articles and share them with others (most of whom are "non-believers" -- *how do you ever open people's minds???*)"

First let me say thank you! We are honored by those words of appreciation, and we are so happy that you want to share the message.

There are countless scientific studies showing biological harm from wireless radiation. With so many studies using so many words maybe there is another way for people to understand what wireless radiation is and how it impacts our bodies.

It is often said that pictures are worth a thousand words. The following pictures may be effective in changing people's opinions about the wireless radiation emitted from so many devices. If you share these you may make believers out of non-believers.

LAPTOPS

Laptops should not be placed on your lap. This picture below shows the absorption of wireless radiation in your tissues from a laptop on a table at the recommended

In This Issue

[Say it with Pictures!](#)

[Lloyd's of London isn't convinced!](#)

[Activists Gain Momentum](#)

[Articles to Read](#)

[Petitions to Sign](#)

Please Donate here to help us get the wireless safety message to more people.

Join the Center For Safer Wireless Fan Page on Facebook

Demonstrate your support of the Center for Safer Wireless. Post your comments and questions on Facebook

[Find us on Facebook](#) 

Follow Us on Twitter

Follow our tweets on Twitter and stay connected to us!

[Follow us on twitter](#)

distance of 8 inches. Depending on where the antenna is located in the laptop your body will be impacted as shown by the colors, with blue showing the greatest absorption of the radiation and red the next level. Imagine the absorption if it were on your lap. Imagine the laptop on a child's lap.

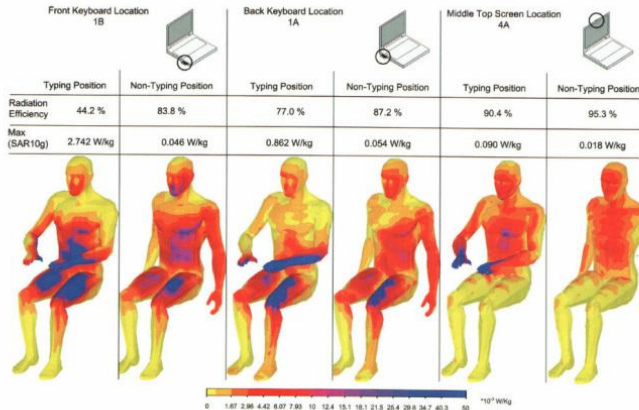


Figure 22. The absorption of electromagnetic energy in human tissue: the resulting antenna radiation efficiencies and SARs in the operator's body at 2.44 GHz for different inverted-F antenna (IFA) element locations.

CELLPHONES

Cellphones put next to the ear don't just irradiate the ear; the wireless radiation goes deeply into the brain, especially the brain of a child. This technology was never tested on children to make sure it was safe for them to use. Since 1996 cellphones have changed, but the graphic below is helpful in demonstrating the difference in the radiation absorbed by a child's brain as the child grows older.

Microwave Cellphone Effects Absorption in the Brain According to Age

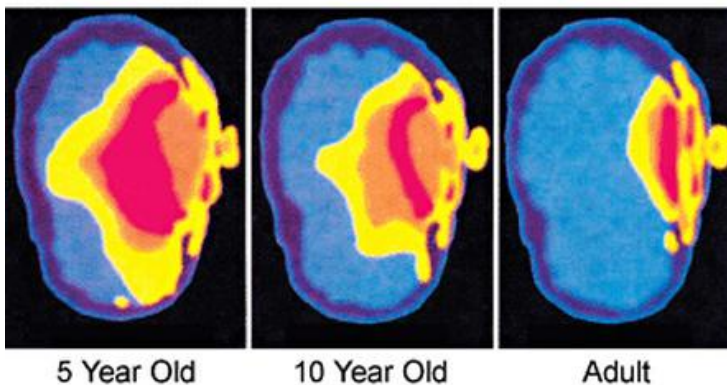


Image courtesy of Dr. Om Gandhi, University of Utah, 1996, IEEE Publication

A student at Newcastle University in the U.K. produced photos showing Wi-Fi networks strength and coverage. The image below demonstrates how Wi-Fi signals circulate the person using his/her cell phone. Colors represent the strength of the signal with blue as the strongest and red the

Follow Us on Pinterest

Follow our wireless safety boards and stay up-to-date with our pins!

FOLLOW US ON 

Take the Cell Phone Safety Pledge

Go to

www.centerforsaferwireless.us to read and take the cell phone safety pledge. Ask your friends on Facebook and Twitter to also take the pledge.

View Us On YouTube

View our videos on 

[Click here to join our mailing list.](#)

weakest. View and read about all of these fascinating images at:

<http://www.dailymail.co.uk/sciencetech/article-2662507/Whirling-Wi-Fi-Vibrant-images-reveal-wireless-networks-sweep-surround-us.html#ixzz35EApptVc>



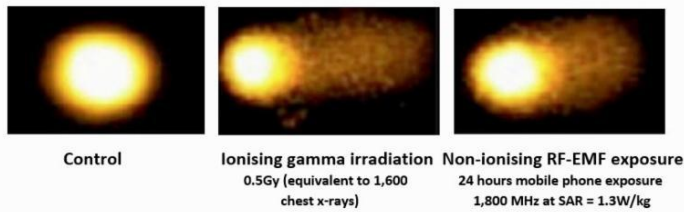
The RISK of Putting a Cellphone in Your Bra

Tiffany Frantz kept her cell phone in the same place under her bra against her bare skin for at least 5 years, 12 hours/day. She was only 21 years old when she was diagnosed with breast cancer, and the masses that were found lined up exactly with where she stored her cell phone. Three other young women experienced similar situations.



Biological PROOF of Effects from Cell phone Radiation

DNA is not supposed to be impacted by wireless radiation (RF-EMF). This picture tells a different story.



The effects of ionising and non-ionising radiation on DNA from the European Commission's 2004 REFLEX Study

Wireless radiation penetrates our organs. What is it doing to the unborn child? No one knows for sure. Shouldn't we be certain before we expose the next generation? Are we choosing to experiment on our most vulnerable group? Are we willing to accept the consequences? The Center for Safer Wireless is working to protect this group and all other living creatures on earth through our advocacy and public education. Please share our message and these pictures so others will join us and take actions to protect the future of life on earth.



Lloyd's of London isn't convinced wireless radiation is safe!

In February 2015, Lloyd's of London, an insurance market where members join together as syndicates to insure risks, notified school districts in Canada that the company has excluded any liability coverage for injuries resulting from exposure to electromagnetic radiation, which includes Wi-Fi at school. Lloyd's of London suffered extreme financial losses from its coverage of asbestos cases. The company is obviously concerned about wireless radiation

and doesn't want to repeat its' asbestos mistake.

Other large insurance companies will probably follow Lloyd's lead. Read about it here.

[School Boards left on the hook for Wi-Fi injuries.](#)

Activists Gain Momentum and Victories

Judge rules electric utility's smart meter opt out fees violate California State Law but Plumas-Sierra Rural Electric Cooperative refuses to reconnect the Hart family home.

Read about it here.

<http://stopsmartmeters.org/2015/04/16/judge-rules-electric-utilitys-smart-meter-opt-out-fees-violate-state-law-psrec-refuses-to-reconnect/>

[Smart meter opt out fee rescinded in Arizona](#)

[Los Angeles firefighters stop cell towers from being placed on fire stations because of health affects.](#)

[Andrea McCarren of WUSA9 broke the story of Maryland parents concerned about the health risk of Wi-Fi in Schools.](#)

Articles to Read

[New Expert Study Confirms New York Times Questions on Wearable Technology](#)

[This article explains why the Swedish Cancer Register has not shown an increased incidence of brain tumors in recent years when in fact, there has been.](#)

Please Consider Signing These Petitions

[Please sign this petition that has been created to support Edna Pettipas in her brave suing of the telecom giant Bell Aliant, Canada.](#)

[Please sign this petition to protest the five companies that are gearing up to provide high-speed global Wi-Fi coverage from space starting in June this year.](#)

Contact Information

Executive Director

Desiree Jaworski

djaworski@centerforsafewireless.us